

DRUKBUIS - HV LINER MET OPPERVLAKTEBEHANDELING
 TUYAU DE PRESSION - HV LINER AVEC TRAITEMENT SUR LA SURFACE
 PRESSURE PIPE - HV LINER WITH SURFACE TREATED

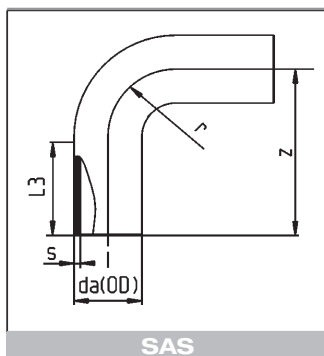
L = 5 m

da	s	KG/ST/PC	€/M
20	1.9	0.23	33.26
25	1.9	0.29	41.94
32	2.4	0.46	56.17
40	2.4	0.57	69.61
50	3.0	0.89	100.10
63	3.0	1.11	117.71
75	3.0	1.37	145.29
90	2.8	1.65	174.97
110	3.0	2.03	215.27
125	3.0	2.31	244.97
140	3.0	2.60	275.80
160	3.0	2.98	316.02
200	3.0	3.73	395.55
250	3.0	4.68	496.28
315	4.0	7.65	811.24
355	4.0	9.54	941.66
400	5.0	12.00	1185.21

HV = chemische etsing waardoor u op het oppervlak een polyester laag kunt aanbrengen.

HV = gravure chimique sur la surface pour adapter une couche en polyester.

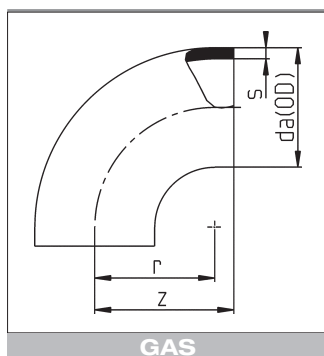
HV = chemical etching on the surface so you can add a polyester layer.



MULTI-BOCHTEN 90°, VERLENGD
MULTI-COUDES 90°, ALLONGES
MULTI-ELBOWS 90°, ELONGATED

Type geschikt voor stomplas / IR + HPF lassen.
Type fait pour soudage bout à bout / IR + HPF.
Type suitable for butt welding / IR + HPF fusion.

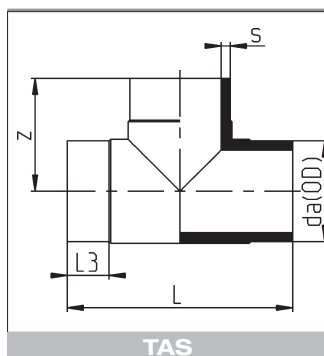
D	L3	z	r	s	KG/ST/PC	€/ST/PC
20	33	51	20	1.9	0.021	38.44
25	33	56	25	1.9	0.028	41.00
32	33	63	32	2.4	0.051	44.84
40	36	72	40	2.4	0.076	66.62
50	36	84	50	3.0	0.134	79.43
63	34	97	63	3.0	0.199	101.21
75	28	100	75	3.6	0.297	168.56
90	34	123	90	2.8	0.383	210.12
110	34	142	110	3.4	0.662	284.42



BOCHTEN 90°
COUDES 90°
ELBOWS 90°

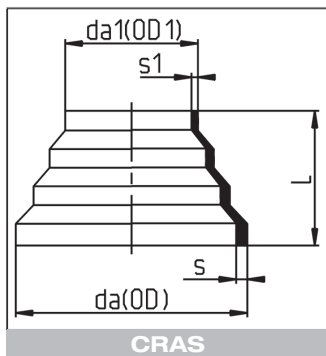
Gespoten.
Injectés.
Moulded.

da	r	z	s	KG/ST/PC	€/ST/PC
140	140	148	3.0	0.647	307.48
160	157	181	3.0	0.915	409.97
200	196	217	3.0	1.500	553.47



T-STUKKEN 90°, GESPOTEN
TES A 90°, INJECTES
TEES 90°, MOULDED

D	L	L3	z	s	KG/ST/PC	€/ST/PC
20	75	25.0	38	1.9	0.023	51.88
25	84	25.0	42	1.9	0.032	55.34
32	90	25.0	46	2.4	0.060	60.53
40	116	31.0	58	2.4	0.080	89.93
50	126	31.0	64	3.0	0.154	107.22
63	140	31.0	70	3.0	0.230	136.63
75	178	42.0	89	3.6	0.387	224.85
90	185	33.5	92	2.8	0.468	283.64
110	221	33.5	110	5.3	0.868	383.96
140	308	60.0	154	6.7	1.740	415.11
160	279	45.0	140	7.7	1.920	553.47
200	446	89.0	223	9.6	5.530	747.18



CONCENTRISCHE VERLOOPSTUKKEN
 REDUCTIONS CONCENTRIQUES
 CONCENTRIC REDUCERS

Gespoten.
 Injectés.
 Moulded.

da x da1	L	L1	L2	s	s1	KG/ST/PC	€/ST/PC
110 x 63	65	11	7	3.4	2.5	0.127	136.63
160 x 110	85	14	13	4.9	3.4	0.326	383.96