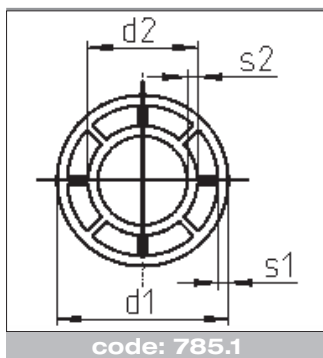


Polyflo dubbelwandige leidingen uit PE 100 en PP werden ontwikkeld voor het verlagen van de risico's bij het transport van agressieve en toxische chemicaliën. Polyflo is een dubbelwandig leidingsysteem waarbij de buizen in één maal worden geproduceerd en de fittingen via spuitgiet technieken werden verkregen. Polyflo biedt daarom het voordeel dat kleinere diameters kunnen worden aangeboden in vergelijking met het Agrusafe systeem. Polyflo wordt eveneens simultaan gelast via stomplas + IR.

Les conduites Polyflo à double paroi en PE 100 et PP ont été développées pour réduire les risques lors du transport de produits chimiques agressifs et toxiques. Polyflo est un système à double paroi de conduites dans lequel les tuyaux sont fabriqués en une seule fois et les raccords obtenus via les techniques d'injection. Le système Polyflo offre dès lors l'avantage de pouvoir offrir de plus petits diamètres en comparaison avec le système Agrusafe. Les conduites Polyflo se laissent souder simultanément via le soudage bout à bout + IR.

Polyflo double wall PE 100 and PP pipes were developed to reduce the risks involved in transporting aggressive and toxic chemicals. Polyflo is a double containment piping system of unitary construction, with the fittings being manufactured through extrusion techniques. This gives Polyflo the advantage of providing smaller diameters than the Agrusafe system. Polyflo is also simultaneously welded using flash butt weld + IR.

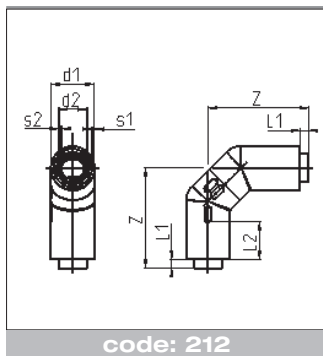


BUIS
 TUYAU
 PIPE

PE 100-RC ZWART OF PPR GRIJS
 PE 100-RC NOIR OU PPR GRIS
 PE 100-RC BLACK OR PPR GREY

L = 5 m

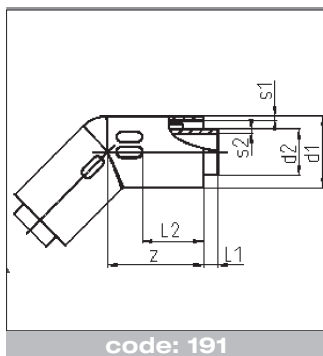
d1	d2	SDR	s1	s2	KG/M	€/M
50	32	17/11	3.0	3.0	0.828	17.57
90	63	17/11	5.4	5.8	2.653	56.28
160	110	17/11	9.5	10.0	7.930	168.26



BOCHTEN 90°
 COUDES 90°
 BENDS 90°

PE 100-RC ZWART OF PPR GRIJS
 PE 100-RC NOIR OU PPR GRIS
 PE 100-RC BLACK OR PPR GREY

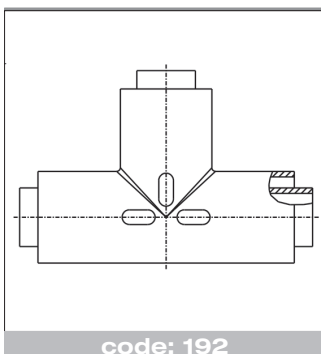
d1	d2	SDR	s1	s2	z	L2	KG/ST/PC	€/ST/PC
50	32	17/11	3.0	3.0	115	43	0.240	160.61
90	63	17/11	5.4	5.8	140	53	0.469	220.95
160	110	17/11	9.5	10.0	246	73	3.540	656.22



BOCHTEN 45°
 COUDES 45°
 BENDS 45°

PE 100-RC ZWART OF PPR
 PE 100-RC NOIR OU PPR
 PE 100-RC BLACK OR PPR

d1	d2	SDR	s1	s2	z	L1	KG/ST/PC	€/ST/PC
50	32	17/11	3.0	3.0	70	7	0.120	56.73
90	63	17/11	5.4	5.8	77	10	0.469	81.01
160	110	17/11	9.5	10.0	107	10	1.880	269.16

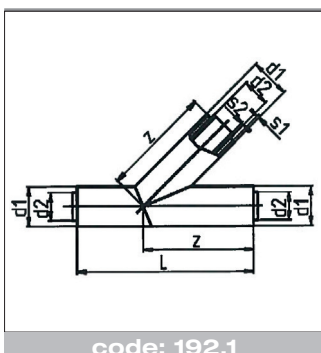


T-STUKKEN
 TÉS
 TEES

PE 100-RC ZWART OF PPR
 PE 100-RC NOIR OU PPR
 PE 100-RC BLACK OR PPR

d1	d2	SDR	s1	s2	z	L	KG/ST/PC	€/ST/PC
50	32	17/11	3.0	3.0	73	146	0.171	90.75
90	63	17/11	5.4	5.8	100	200	0.747	129.61
160	110	17/11	9.5	10.0	155	310	3.340	430.68

code: 192



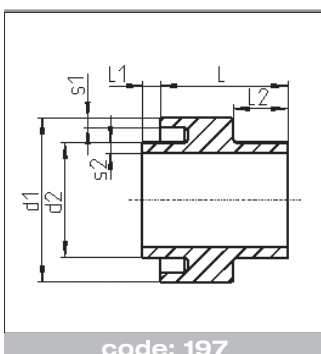
T-STUKKEN 45°
 TÉS A 45°
 TEES 45°

PE 100-RC ZWART OF PPR
 PE 100-RC NOIR OU PPR
 PE 100-RC BLACK OR PPR

Veiligheidsfactor x 0,5 / Facteur de sécurité x 0,5 / Security factor x 0,5

d1	d2	SDR	s1	d1	d2	L	L1	KG/ST/PC	€/ST/PC
50	32	17/11	3.0	50	32	300	10	0.37	250.38
90	63	17/11	5.4	90	63	400	10	1.49	338.76
160	110	17/11	9.5	160	110	550	10	6.02	782.71

code: 192.1

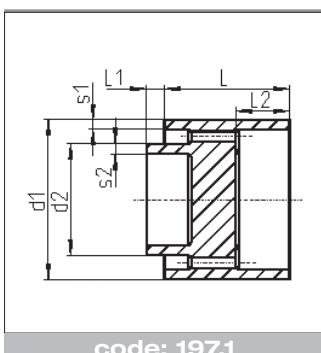


VERANKERINGSPOINT
 POINT D'ANCRAGE
 DOG BONE

PE 100-RC ZWART OF PPR
 PE 100-RC NOIR OU PPR
 PE 100-RC BLACK OR PPR

d1	d2	SDR	s1	s2	L	L1	L2	KG/ST/PC	€/ST/PC
50	32	17/11	3.0	3.0	55	10	25	0.045	193.92
90	63	17/11	5.4	5.8	70	10	30	0.195	210.44
160	110	17/11	9.5	10.0	105	10	55	0.823	360.47

code: 197

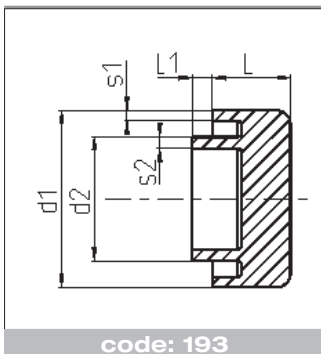


ADAPTER BUITENBUIS
 ADAPTATEUR TUBE EXTERIEUR
 OUTER WALL ADAPTOR

PE 100-RC ZWART OF PPR
 PE 100-RC NOIR OU PPR
 PE 100-RC BLACK OR PPR

d1	d2	SDR	s1	s2	L	L1	L2	KG/ST/PC	€/ST/PC
50	32	17/11	3.0	3.0	60	10	30	0.06	223.00
90	63	17/11	5.4	5.8	70	10	30	0.25	242.01
160	110	17/11	9.5	10.0	80	10	30	0.95	414.52

code: 197.1

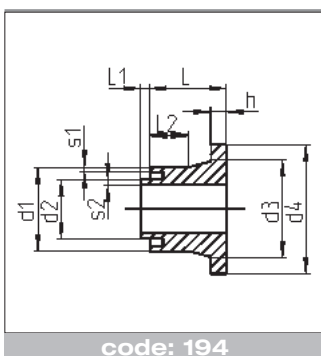


code: 193

EINDKAPPEN
 BOUCHONS
 END CAPS

PE 100-RC ZWART OF PPR
 PE 100-RC NOIR OU PPR
 PE 100-RC BLACK OR PPR

d1	d2	SDR	s1	s2	L	L1	KG/ST/PC	€/ST/PC
50	32	17/11	3.0	3.0	30	10	0.063	129.29
90	63	17/11	5.4	5.8	40	10	0.264	140.29
160	110	17/11	9.5	10.0	50	10	0.853	240.31

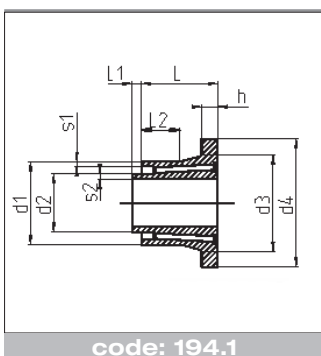


code: 194

VOORLASKRAAG
 COLLET
 STUBS

PE 100-RC ZWART OF PPR
 PE 100-RC NOIR OU PPR
 PE 100-RC BLACK OR PPR

d1	d2	SDR	s1	s2	d3	d4	L	L1	L2	KG/ST/PC	€/ST/PC
50	32	17/11	3.0	3.0	61	88	30	10	23	0.327	164.36
90	63	17/11	5.4	5.8	105	138	40	10	41	0.480	189.52
160	110	17/11	9.5	10.0	175	212	50	10	39	1.580	432.66

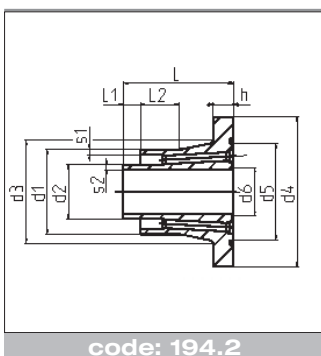


code: 194.1

VOORLASKRAAG
 COLLET
 STUBS

PE 100-RC ZWART OF PPR
 PE 100-RC NOIR OU PPR
 PE 100-RC BLACK OR PPR

d1	d2	SDR	s1	s2	d3	h	KG/ST/PC	€/ST/PC
50	32	17/11	3.0	3.0	61	12	0.118	189.02
90	63	17/11	5.4	5.8	105	17	0.387	217.96
160	110	17/11	9.5	10.0	175	25	1.600	497.55



code: 194.2

VOORLASKRAAG
 COLLET
 STUBS

PE 100-RC ZWART OF PPR
 PE 100-RC NOIR OU PPR
 PE 100-RC BLACK OR PPR

Met geïntegreerde O-ring.
 Avec joints toriques inclus.
 With including O-rings.

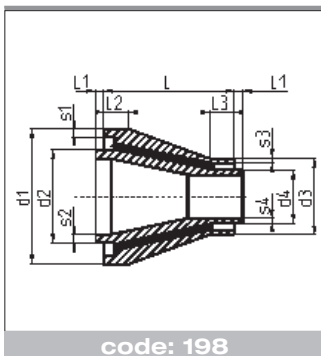
d1	d2	SDR	s1	s2	d3	h	KG/ST/PC	€/ST/PC
50	32	17/11	3.0	3.0	61	12	0.125	189.02
90	63	17/11	5.4	5.8	105	17	0.385	217.96
160	110	17/11	9.5	10.0	175	25	1.600	497.55

Opmerking / remarque / remark :

Te gebruiken in combinatie met voorlaskraag code 194 of 194.1.

Utilisation en combinaison avec collet code 194 ou 194.1.

Use in combination with stubs code 194 or 194.1

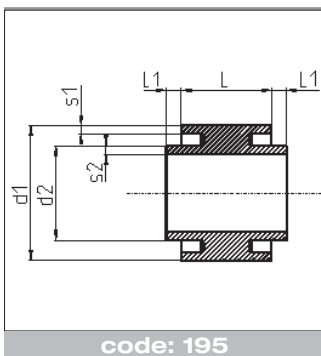


CONCENTRISCHE VERLOOPSTUKKEN
 REDUCTIONS CONCENTRIQUES
 CONCENTRIC REDUCERS

PE 100-RC ZWART OF PPR
 PE 100-RC NOIR OU PPR
 PE 100-RC BLACK OR PPR

d1	d2	SDR	s1	s2	s3	s4	d3	d4	L	L1	L2	L3	KG ST/PC	€ ST/PC
90	63	17/11	5.4	5.8	3.0	3.0	50	32	110	10	30	28	0.29	199.00
160	110	17/11	9.5	10.0	5.4	5.8	90	63	155	10	30	29	1.33	454.27

code: 198

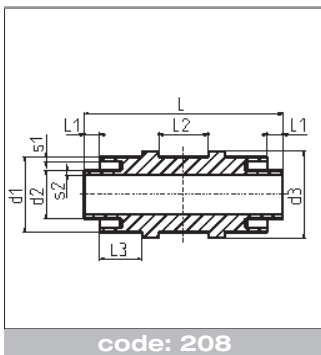


VASTE PUNT
 POINT FIXE
 FIXED POINT

PE 100-RC ZWART OF PPR
 PE 100-RC NOIR OU PPR
 PE 100-RC BLACK OR PPR

d1	d2	SDR	s1	s2	L	L1	KG/ST/PC	€/ST/PC
50	32	17/11	3.0	3.0	50	10	0.06	45.23
90	63	17/11	5.4	5.8	60	10	0.24	104.87
160	110	17/11	9.5	10.0	80	10	1.00	210.88

code: 195

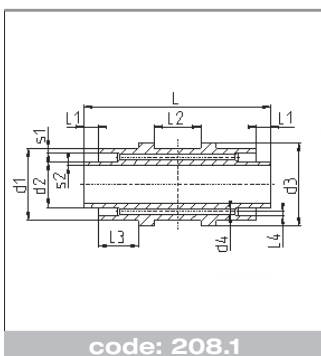


VASTE PUNT
 POINT FIXE
 FIXED POINT

PE 100-RC ZWART OF PPR
 PE 100-RC NOIR OU PPR
 PE 100-RC BLACK OR PPR

d1	d2	SDR	s1	s2	d3	L	L1	L2	L3	KG/ST/PC	€/ST/PC
50	32	17/11	3.0	3.0	58	130	10	32.5	28	0.155	90.46
90	63	17/11	5.4	5.8	105	136	10	40.0	28	0.515	209.76
160	110	17/11	9.5	10.0	180	140	10	40.0	30	1.660	421.77

code: 208

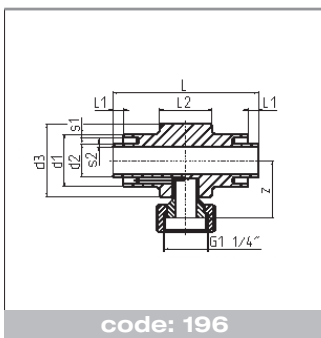


VASTE PUNT
 POINT FIXE
 FIXED POINT

PE 100-RC ZWART OF PPR
 PE 100-RC NOIR OU PPR
 PE 100-RC BLACK OR PPR

d1	d2	SDR	s1	s2	d3	L	L1	L2	L3	KG/ST/PC	€/ST/PC
50	32	17/11	3.0	3.0	58	130	10	32.5	28	0.150	104.02
90	63	17/11	5.4	5.8	105	136	10	40.0	28	0.505	241.23
160	110	17/11	9.5	10.0	180	140	10	40.0	30	1.600	485.04

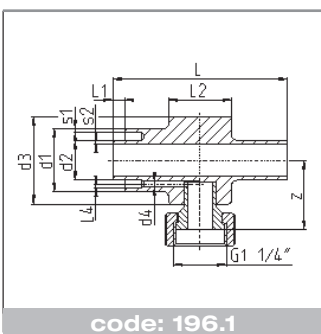
code: 208.1



MEETFITTING PE 100-RC ZWART OF PPR
 RACCORD DE MESURE PE 100-RC NOIR OU PPR
 MEASURING FITTING PE 100-RC BLACK OR PPR

Met éézijdige aansluiting voor lekkage-bewaking.
 Avec unilatéral connection pour surveillance de fuites.
 With single connection for leakage surveillance.

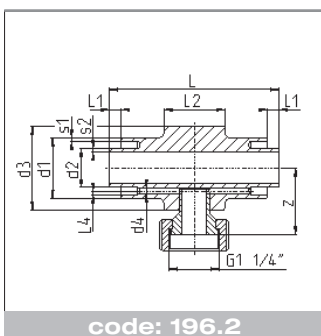
d1	d2	SDR	s1	s2	d3	L	L1	L2	z	KG/ST/PC	€/ST/PC
50	32	17/11	3.0	3.0	70	140	10	50	55	0.287	124.84
90	63	17/11	5.4	5.8	102	140	10	50	71	0.612	289.48
160	110	17/11	9.5	10.0	160	140	10	50	100	1.495	582.04



MEETFITTING PE 100-RC ZWART OF PPR
 RACCORD DE MESURE PE 100-RC NOIR OU PPR
 MEASURING FITTING PE 100-RC BLACK OR PPR

Met éézijdige aansluiting voor lekkage-bewaking / overgang enkelwandige buis.
 Avec unilatéral connection pour surveillance de fuites / connection sur tuyau simple.
 With single connection for leakage surveillance / connection to single pipe.

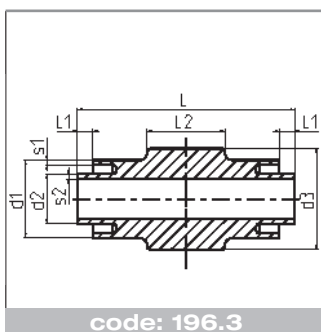
d1	d2	SDR	s1	s2	d3	L	L1	L2	z	KG/ST/PC	€/ST/PC
50	32	17/11	3.0	3.0	70	140	10	50	55	0.260	124.84
90	63	17/11	5.4	5.8	102	140	10	50	71	0.527	289.48
160	110	17/11	9.5	10.0	160	140	10	50	100	1.500	582.04



MEETFITTING PE 100-RC ZWART OF PPR
 RACCORD DE MESURE PE 100-RC NOIR OU PPR
 MEASURING FITTING PE 100-RC BLACK OR PPR

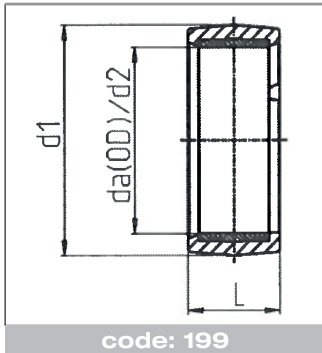
Met tweezijdige aansluiting voor lekkage-bewaking.
 Avec double connection pour surveillance de fuites.
 With double connection for leakage surveillance.

d1	d2	SDR	s1	s2	d3	L	L1	L2	z	KG/ST/PC	€/ST/PC
50	32	17/11	3.0	3.0	70	140	10	50	55	0.290	124.84
90	63	17/11	5.4	5.8	102	140	10	50	71	0.613	289.48
160	110	17/11	9.5	10.0	160	140	10	50	100	1.600	582.04



INSTUMENTATIE FITTING PE 100-RC ZWART OF PPR
 RACCORD DE MESURE PE 100-RC NOIR OU PPR
 INSTRUMENTATION FITTING PE 100-RC BLACK OR PPR

d1	d2	SDR	s1	s2	d3	L	L1	L2	KG/ST/PC	€/ST/PC
50	32	17/11	3.0	3.0	65	140	10	50	0.23	104.02
90	63	17/11	5.4	5.8	90	140	10	0	0.49	241.23
160	110	17/11	9.5	10.0	160	140	10	0	1.46	485.04



INDUCTIE E-MOF PE 100-RC ZWART OF PPR
E-MANCHON INDUCTION PE 100-RC NOIR OU PPR
INDUCTION E-COUPLER PE 100-RC BLACK OR PPR

da	L	d1	KG/ST/PC	€/ST/PC
50	25	62.5	0.033	36.91
90	30	106.5	0.080	79.68
160	50	185.0	0.350	184.08

Opmerking / remarque / remark :

Lasmachine op aanvraag
Machine à souder sur demande
Welding machine on request